

ResMed

# A quick guide to Air Travel with CPAP

Your step by step guide to traveling with CPAP therapy and everything you need to think of for a comfortable trip.



## 1 Destination

Once you've chosen your destination, why not **download our full guide to travelling with CPAP**. Whether you're flying, driving, camping or sailing there's plenty of useful travel tips.

## 2 Equipment

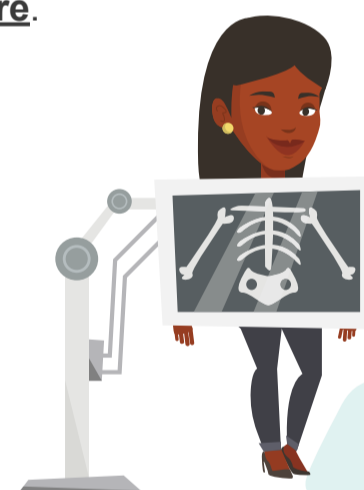
Is your equipment suitable for travel? If you have an **AirSense™ 10 Autoset™**, then you may want to invest in a **AirSense 10 travel bag**. Alternatively, you may want to consider the **portable AirMini™**. We also have low maintenance mask solutions such as the AirTouch. **Learn More**.

## 3 Travel letters

As well as passport, ticket and destination information, you may also need a copy of **ResMed's FAA compliance letter** for flying with CPAP as well as a letter from your doctor confirming that you're on treatment. Check that your insurance covers you for traveling with a pre-existing condition.

## 4 Contact your airline

Get clearance from the airline to use your CPAP and check what type of power source your Airline has. Now is a good time to think about the **RPSII Power Pack**, just in case you don't have access to power.



## 8 Useful Documents

Have the following information to hand:

- Your treatment pressure
- Your mask type and size
- Contact details for your equipment supplier and care provider
- Your health insurance information
- Your doctor's details
- A copy of your **ResMed FAA Air Travel Compliance Letter**.

## 7 Baggage

Make sure everything you need is packed in your hand luggage, including a spare mask, wipes, power adaptor and of course your device to avoid damage in the luggage hold. For extra protection you may want to consider a **travel case**. X-Ray scanners at airports do not adversely affect our CPAP devices.

## 6 Spares & Supplies

Check you have plenty of accessories for your journey and stock up at mySleep. Useful items you may need to consider:

- Spare mask cushion
- Travel mask wipes
- Spare tubing
- Spare filter
- RPSII power supply
- DC/DC converter

Find out why the breathable AirTouch mask is **great for travel**.

## 5 Research

Find out what type of power adaptor plug is required at your destination. If you want extra peace of mind, you can also find out whether there is an accredited ResMed outlet in the country you're visiting. Simply **email the ResMed team** and tell us which country you're visiting and we'll let you know the nearest office. Your Hotel room may not have a power socket located near the bed head, so pack an extension cord to use your device and mask, comfortably.

## 9 Humidifier

If you have a humidifier, be sure to empty the water and detach it from your device whilst in transit. N.B. Subject to having clearance from the airline, you can use your CPAP device on board, but not your humidifier due to the risk of water damage, unless you're using HumidX, the waterless humidification system available with **AirMini**.

## 10 Other useful stuff

Remember it is useful to carry a set of **spare parts** to ensure you can continue with your therapy throughout your trip.

*Have a safe, comfortable and happy trip*



Visit website